

HENRIK

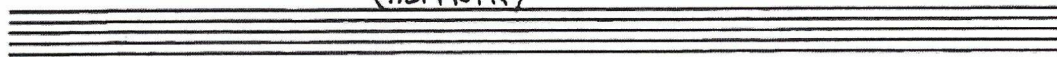
VOCAL

"A LITTLE NIGHT MUSIC"

5

LATER

(HENRIK)



Musical notation for the beginning of the piece. The vocal line is labeled "HENRIK (VOCAL)" and the cello line is labeled "CELLO (ON STAGE)". Both parts are in 3/4 time. The key signature has two sharps (F# and C#). The first measure of the vocal line has a circled "5" above it. The first measure of the cello line has a circled "4" above it. The second measure of the cello line has "5-8" written below it.

Musical notation for measures 9, 10, and 11. The vocal line has lyrics: "LA-TER...", "WHEN IS LA-TER?... ", and "ALL YOU EV-ER HEAR IS". The cello line provides accompaniment. Measure numbers 9, 10, and 11 are circled above the vocal line.

Musical notation for measures 12, 13, and 14. The vocal line has lyrics: "LA-TER, HENRIK! HENRIK, LA-TER...", "YES, WE KNOW, HENRIK OH HENRIK... EV-RY-ONE AGREES, HENRIK... PLEASE, HENRIK!", and "PER-SON-AL DIS-COV-E-RY OR PROB-LEM, AND IT'S". The cello line provides accompaniment. Measure numbers 12, 13, and 14 are circled above the vocal line.

Musical notation for measures 15 and 16. The vocal line has lyrics: "YOU HAVE A THOUGHT YOU'RE FAIR-ly BURST-ING WITH, A" and "PER-SON-AL DIS-COV-E-RY OR PROB-LEM, AND IT'S". The cello line provides accompaniment. Measure numbers 15 and 16 are circled above the vocal line.

P 2580-802-74

19

VOCAL

-2- "LATER"

(17) HENRIK (18)

"WHAT'S YOUR RUSH, HEN-RIK? SHUSH, HEN-RIK-- GOOD-NESS, HOW YOU GUSH, HEN-RIK--HUSH, HEN-RIK!"

CELLO

(19) H. (20) (21)

YOU MUR-MUR, I ONLY...IT'S JUST THAT. FOR GOD'S

CELLO

(MOLTO ACCEL.)

(22) H. R. (RIT.)

SAKE!

LA-TER, HEN-RIK...

CELLO

Ten.

HE

CE

C

C

HENRIK
(TRIO)

A. ~~MUCH~~ AND YOU'LL HAVE TO AD -
H. ~~MUCH~~ SINCE I HAVE TO AD -
F. YOU'LL COME IN - TO MY BED AND YOU'LL HAVE TO AD -

(124) (125) (126) (127)
A. -MIT I'M EN - DEAR - ING I
H. -MIT. I FIND PEER - ING
F. -MIT I'VE BEEN HEAR - ING

(128) (129) (130) (131)
A. HELP KEEP THINGS HUM - MING, I'M
H. THROUGH LIFE'S GRAY WIN-DOWS IM - PA-TIENT-LY
F. ALL THOSE TREM - U - LOUS CRIES, PA - TIENT - LY

(132) (133) (134) (135)
A. NOT DOM - I - NEER - ING, WHAT'S
H. NOT VER - Y CHEER - ING
F. NOT IN TER FER - ING

(136) (137) (138) (139)
A. ONE SMALL SHORT - COM - ING? AND
H. DO I FEAR DEATH? LET IT COME TO ME
F. WITH THOSE TREM - U - LOUS THINGS. COME TO ME

